



PROJECT-TO

ELECTRONIC GENERATION

RICCARDO MAZZA
(Music & Production)

LAURA POL
(Visual & Film Making)

CARLO BAGINI
(Keyboards)

All tracks composed and programmed by Riccardo Mazza
Mixed and mastered by Riccardo Mazza at Interactive Sound Studio - Turin

Produced by A21 Productions

Published by Machiavelli Music Publishing

All rights reserved worldwide

© 2016 A21 Productions - © 2016 Machiavelli Music Publishing
www.project-to.com www.machiavellimusic.com

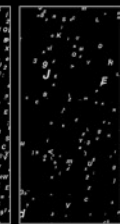
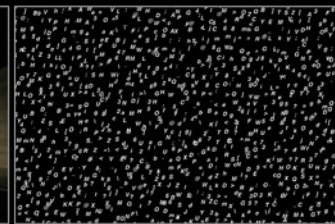
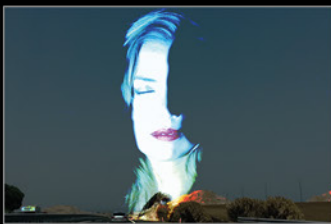
THE WHITE SIDE

1. I HOPE
2. SIGN OF THE EARTH
3. LOOK FURTHER
4. REBIRTH
5. YA-HO
6. ROGER

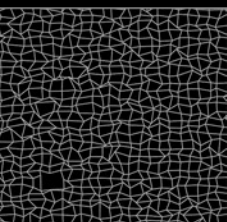
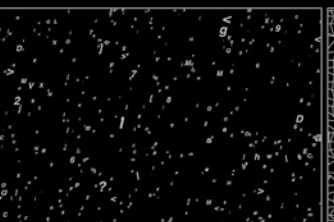
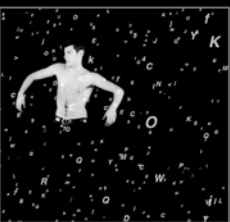
THE BLACK SIDE

1. BLACK I HOPE
2. BLACK SIGN OF THE EARTH
3. BLACK LOOK FURTHER
4. BLACK REBIRTH
5. BLACK YA-HO
6. BLACK ROGER

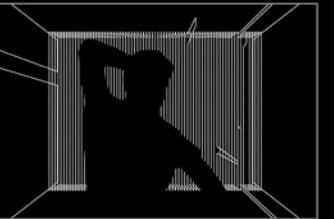
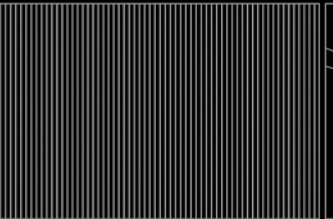
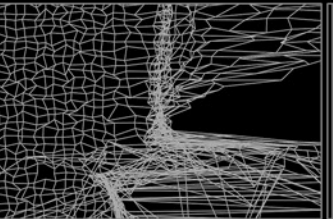
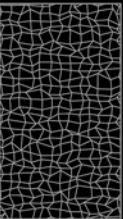
I HOPE



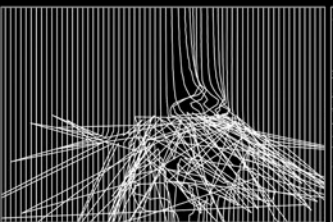
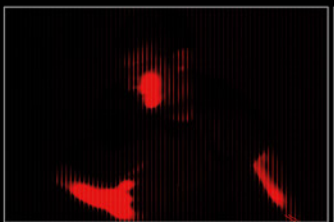
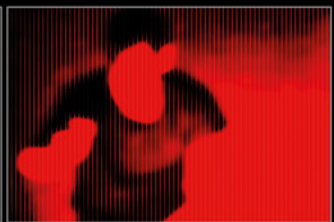
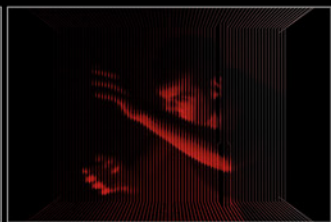
SIGN OF THE EARTH



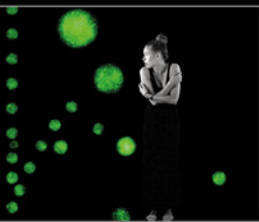
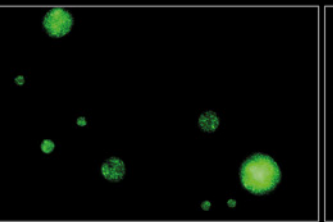
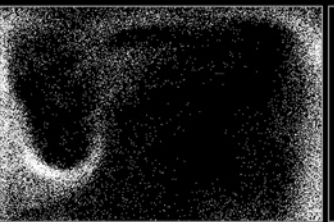
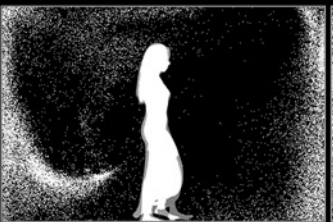
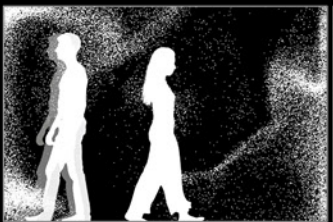
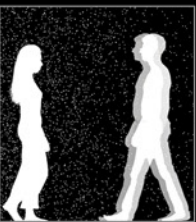
LOOK FURTHER



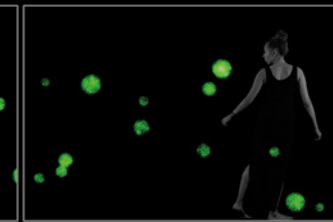
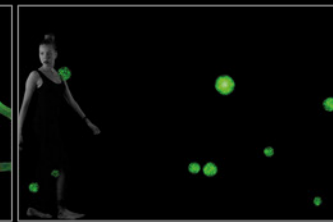
REBIRTH



YA-HO



ROGER



LIVE SET sound+visual

Project-TO stems from an idea of Riccardo Mazza, sound experimenter and professor at the School for Alto Perfezionamento Musicale (Advanced Musical Studies) of Saluzzo, known in Italy and abroad for his research in the field of psychoacoustics and the evaluation of spatial sound, and Laura Pol photographer and video-maker, author of numerous works in the world of art, culture and museums.

It is an "authorial" project of electronic and visual music that, with keyboard player Carlo Bagini already well-known for having played with bands such as Statuto, Righeira, Rettore, develops from the interaction of purely electronic elements with original compositions performed live together with visual elements also carried out in real time during the Live Set.

An evolving project that transforms the space in which it lives, generating unique Live performances each time.

